



Sustainable Forestry Council  
*September 23, 2010*



Where does land preservation funding  
come from?

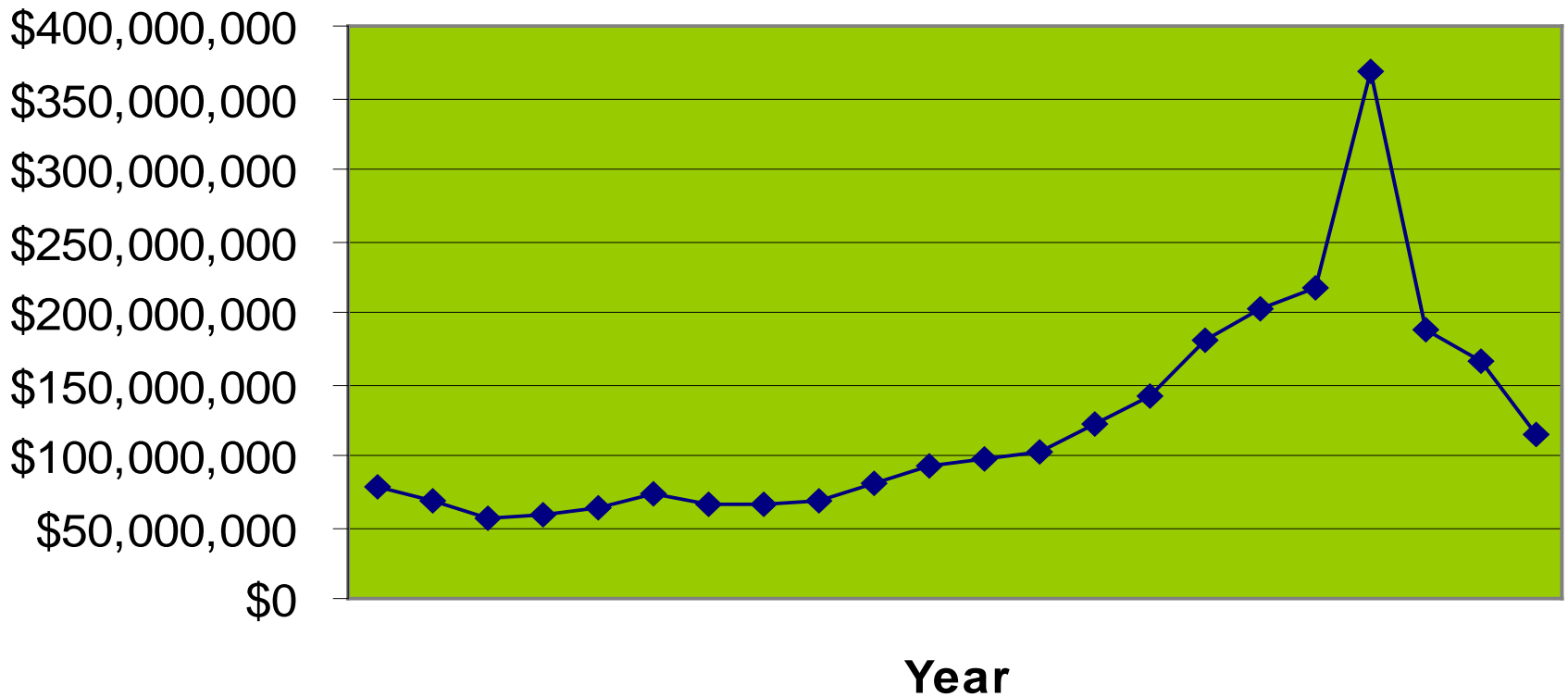
## Program Open Space

- **Generated by real estate transfer tax (.5%)**
- **Designed to ensure that open space keeps up with development**
- **Provide funding for outdoor recreational facilities**

# Sustainable Forestry Council

<i><b>FY 2011 Funding</b></i>	
State-side POS	\$10 million
Local-side POS	\$12 million
Community Parks & Playgrounds	\$2.5 million
Rural Legacy	\$12.6 million
MALPF	\$11.8 million

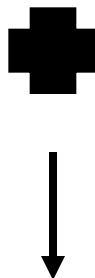
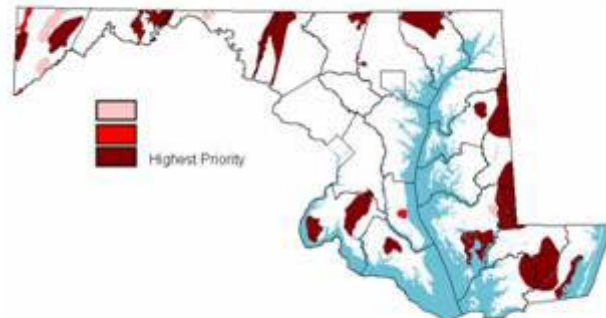
### Maryland Transfer Tax Revenues 1989-2010



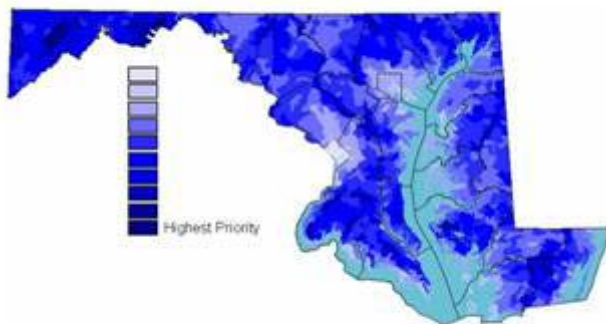
Green Infrastructure



Rare Species Habitats



Water Quality Protection

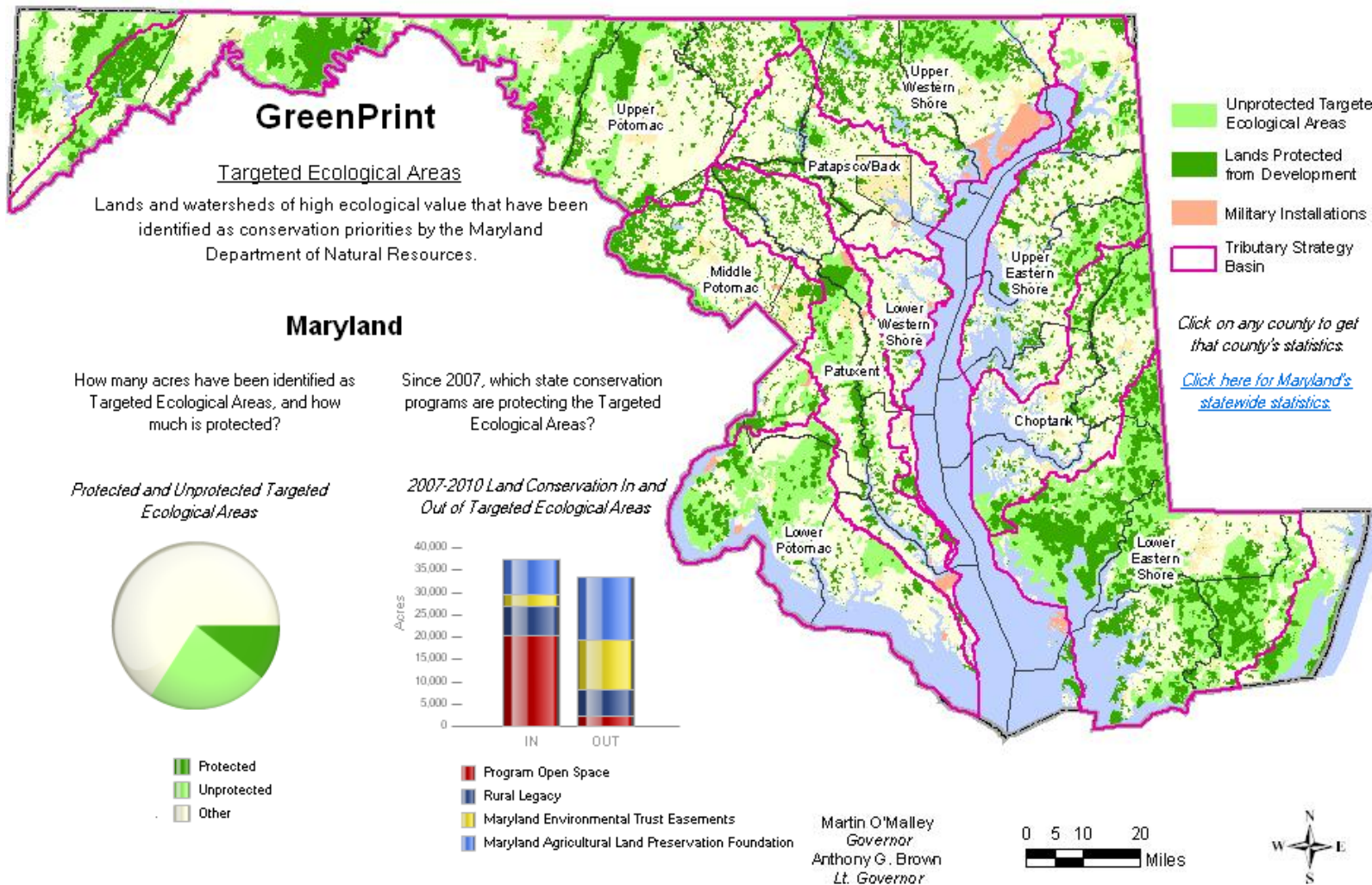


Aquatic Life Hotspots



Targeted Ecological Areas





- **Stewardship Review:**
  - Collaborative review by DNR's experts and thorough consideration of resource information
  - Holistic consideration of management – working lands (farms/forests), structures, resident curatorships, trails, restoration, survey questions
  - Final recommendation



- 95% of State-side funds used for ecologically significant acquisitions
- Since 2007, about half of State-side acquisitions have been forested land
- In FY 2010 77% of the State's acquisitions were forests!