

PUBLIC NOTICE
MARYLAND DEPARTMENT OF NATURAL RESOURCES
FISHING AND BOATING SERVICES
APPLICATION FOR SHELLFISH AQUACULTURE LEASE – CHESAPEAKE SEA FARMS

The Secretary of Maryland Department of Natural Resources (DNR), pursuant to Natural Resources Article, §4-11A-09(g), Annotated Code of Maryland, is giving notice of an application for a shellfish aquaculture water column lease by Chesapeake Sea Farms in St. Jerome Creek, St. Mary's County, Maryland. The proposed site is located along the shoreline in the Northern Prong of the creek, just south of Taylor Cove. The area applied for contains 0.12 acres more or less and is enclosed by a line beginning at corner 1, at or near Lat. 38° 7' 22.9" N., Long. 76° 21' 22.0" W., then running 330° 55' (True), approximately 5 meters to corner 2, at or near Lat. 38° 7' 23.0" N., Long. 76° 21' 22.1" W., then running 29° 55' (True), approximately 6 meters to corner 3, at or near Lat. 38° 7' 23.2" N., Long. 76° 21' 22.0" W., then running 335° 50' (True), approximately 7 meters to corner 4, at or near Lat. 38° 7' 23.5" N., Long. 76° 21' 22.1" W., then running 21° 13' (True), approximately 18 meters to corner 5, at or near Lat. 38° 7' 24.0" N., Long. 76° 21' 21.9" W., then running 328° 53' (True), approximately 12 meters to corner 6, at or near Lat. 38° 7' 24.4" N., Long. 76° 21' 22.2" W., then running 53° 53' (True), approximately 12 meters to corner 7, at or near Lat. 38° 7' 24.6" N., Long. 76° 21' 21.8" W., then running 165° 43' (True), approximately 26 meters to corner 8, at or near Lat. 38° 7' 23.8" N., Long. 76° 21' 21.5" W., then running 136° 24' (True), approximately 5 meters to corner 9, at or near Lat. 38° 7' 23.7" N., Long. 76° 21' 21.3" W., then running 225° 30' (True), approximately 19 meters to corner 10, at or near Lat. 38° 7' 23.2" N., Long. 76° 21' 21.9" W., then running 162° 41' (True), approximately 5 meters to corner 11, at or near Lat. 38° 7' 23.1" N., Long. 76° 21' 21.8" W., then running 222° 10' (True), approximately 7 meters to the point of beginning.

The applicant proposes to deploy a combination of floating gear and bags on bottom up to a maximum of four inches high for the purpose of culturing Eastern Oyster (*Crassostrea virginica*) and several native clam species, and to harvest using methods approved by the Department. A map of the proposed lease is [awcej gf0](#)

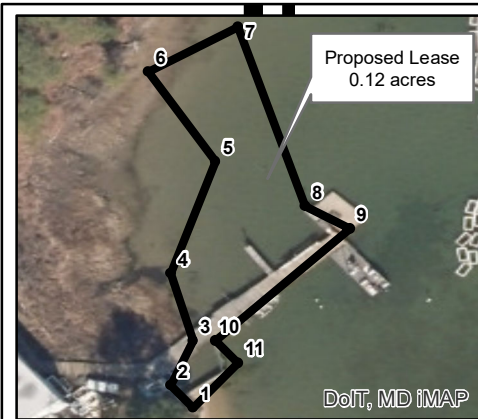
The Department will hold a public informational meeting upon written request from a member of the public. In addition, any person who has a specific right, duty, privilege, or interest that is different from that held by the general public and may be adversely affected by the proposed lease may file a Petition of Protest with the Department. Petitions that meet the requirements of Natural Resources Article §4-11A-09(g) shall be forwarded to the Office of Administrative Hearings for adjudication. Comments, written requests for public informational meetings, and/or Petitions of Protest must be received by the Department of Natural Resources Aquaculture and Industry Enhancement Division 580 Taylor Avenue E-4 Annapolis, MD 21401 by October 9, 2018.

For questions about the project or the public notice please contact Rebecca Thur at the DNR Aquaculture and Industry Enhancement Division at rebecca.thur@maryland.gov or 410-260-8252.

Mark J. Belton
Secretary
Maryland Department of Natural Resources

Proposed Shellfish Water Column Lease NAV Chart Map

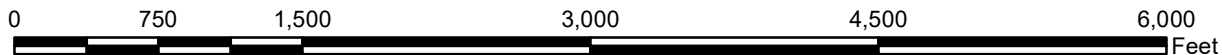
Chesapeake Sea Farms #375 - St. Jerome Creek, St. Mary's County Maryland



See Insert for detail

Label	Coordinates	MLLW (ft)
1	N 38° 7' 22.9", E -76° 21' 22.0"	MLW
2	N 38° 7' 23.0", E -76° 21' 22.1"	MLW
3	N 38° 7' 23.2", E -76° 21' 22.0"	MLW
4	N 38° 7' 23.5", E -76° 21' 22.1"	MLW
5	N 38° 7' 24.0", E -76° 21' 21.9"	1.0
6	N 38° 7' 24.4", E -76° 21' 22.2"	MLW
7	N 38° 7' 24.6", E -76° 21' 21.8"	1.0
8	N 38° 7' 23.8", E -76° 21' 21.5"	1.5
9	N 38° 7' 23.7", E -76° 21' 21.3"	1.5
10	N 38° 7' 23.2", E -76° 21' 21.9"	0.5
11	N 38° 7' 23.1", E -76° 21' 21.8"	0.5

Corner markers will be used to mark the lease perimeter in accordance with Natural Resources Article §4-11A-10 and will be subject to U.S. Coast Guard approval.



Lease Area shown over NOAA Raster Navigational Charts.

- Proposed Lease
- Land-Based-Sanctuaries and Refuges (state, federal, private, etc)
- Submerged Aquatic Vegetation (VIMS)
- Structures (Piers, Marinas, etc)
- Wetlands of Special State Concern (MD-DNR)
- Active Shellfish Lease
- Proposed Shellfish Lease
- Tidal Wetlands (NWI Wetlands) (excludes E1 type)



Larry Hogan
Governor
Boyd K. Rutherford
Lt. Governor
Mark J. Belton
Secretary



Maryland Department of Natural Resources
 Center for Geospatial Products and Services
 580 Taylor Ave. E-2 Annapolis, MD 21401
 410-260-8985 or 1-877-620-8DNR x8985
 dnr.maryland.gov
 DNR June 2018