

**ANNEX 6 – Flow Patterns for Pump-out Units**

The following photos are of the actual flow patterns exhibited by the pumpout units as recorded by the Thermo Westronics SV100 Paperless Recorder (See page 28). The photos represent a real time snapshot of the equipments flow characteristics. The actual flow rate (in GPM) is represented by the darker colored line (typically shown as a jagged line) and the average flow rate (in GPM) is the lighter colored line that is a straight line or a straight line with a smooth offset. The x-axis represents flow (GPM) and the y-axis is time with the oldest data at the bottom of the graph.

**Diaphragm Units**

**Figure 6.1 - Edson International Model 284EB-40 Diaphragm Pump-out Unit**



**Figure 6.2 - Exstar International Sani-Station SS-100 Deluxe Diaphragm Pump-out Unit**



**Note:** No flow pattern photograph was available for the Keco Model PAH-175 Diaphragm Pump-out unit. However, the flow pattern for this unit was similar to that of the other two diaphragms pump-out units.

Peristaltic Units

Figure 6.3 - Edson International Model 286EP-40 Peristaltic Pump-out Unit

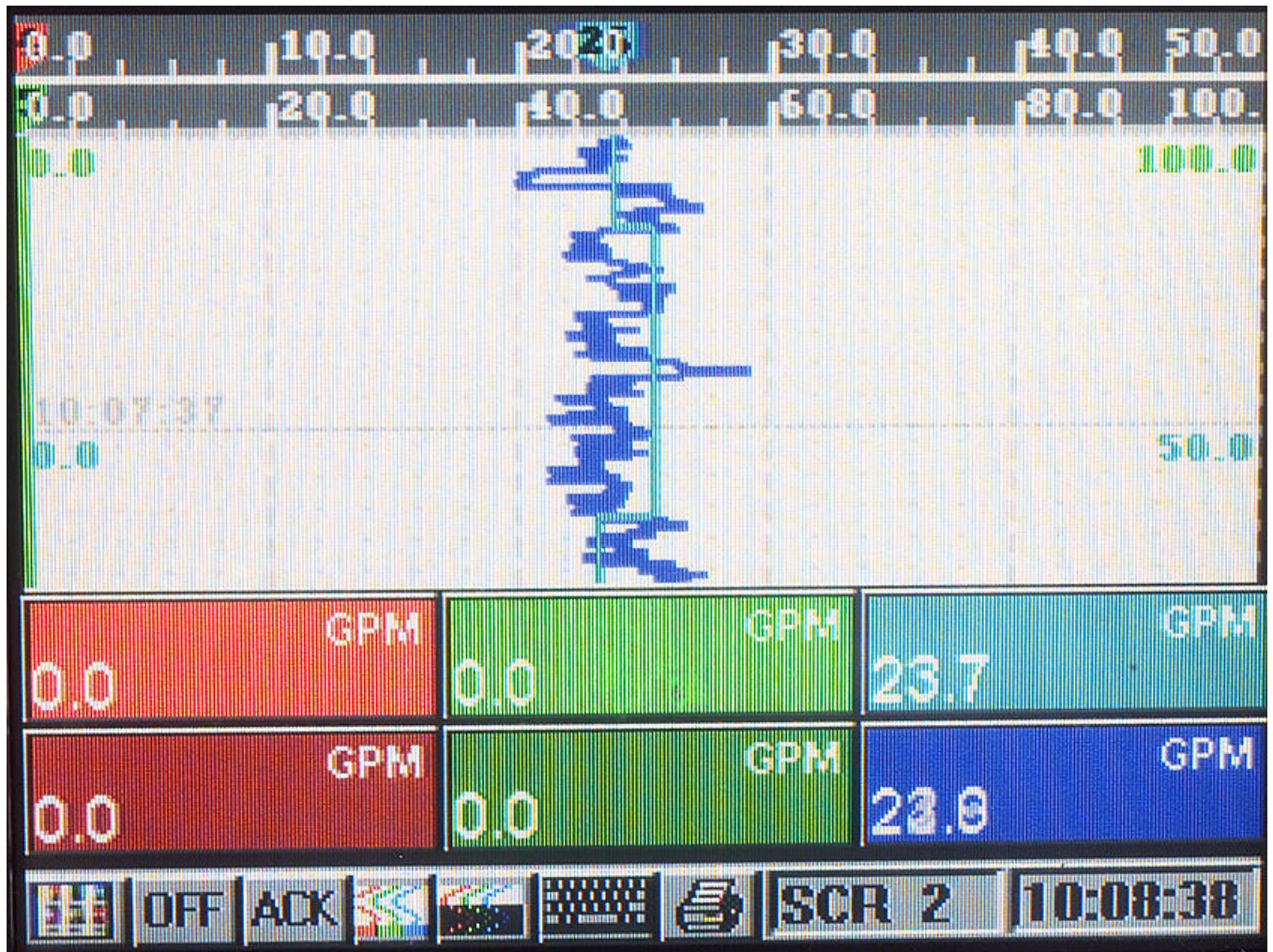


Figure 6.4 - EMP Industries Sanisailor Sentinel - M300 Peristaltic Pump-out Unit

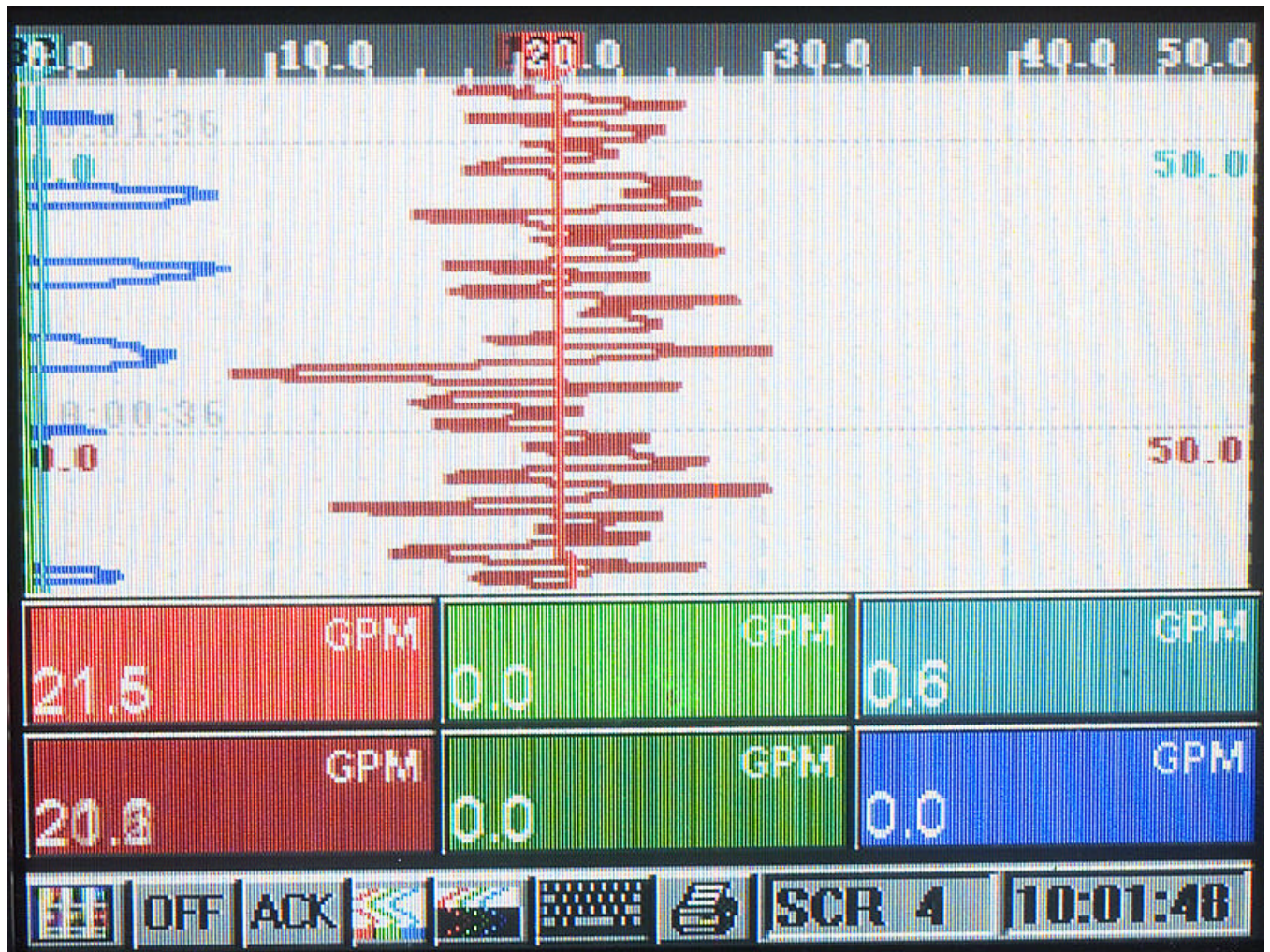


Figure 6.5 - EMP Industries Sanisailor Sentinel – EV405 Peristaltic Pump-out Unit

