

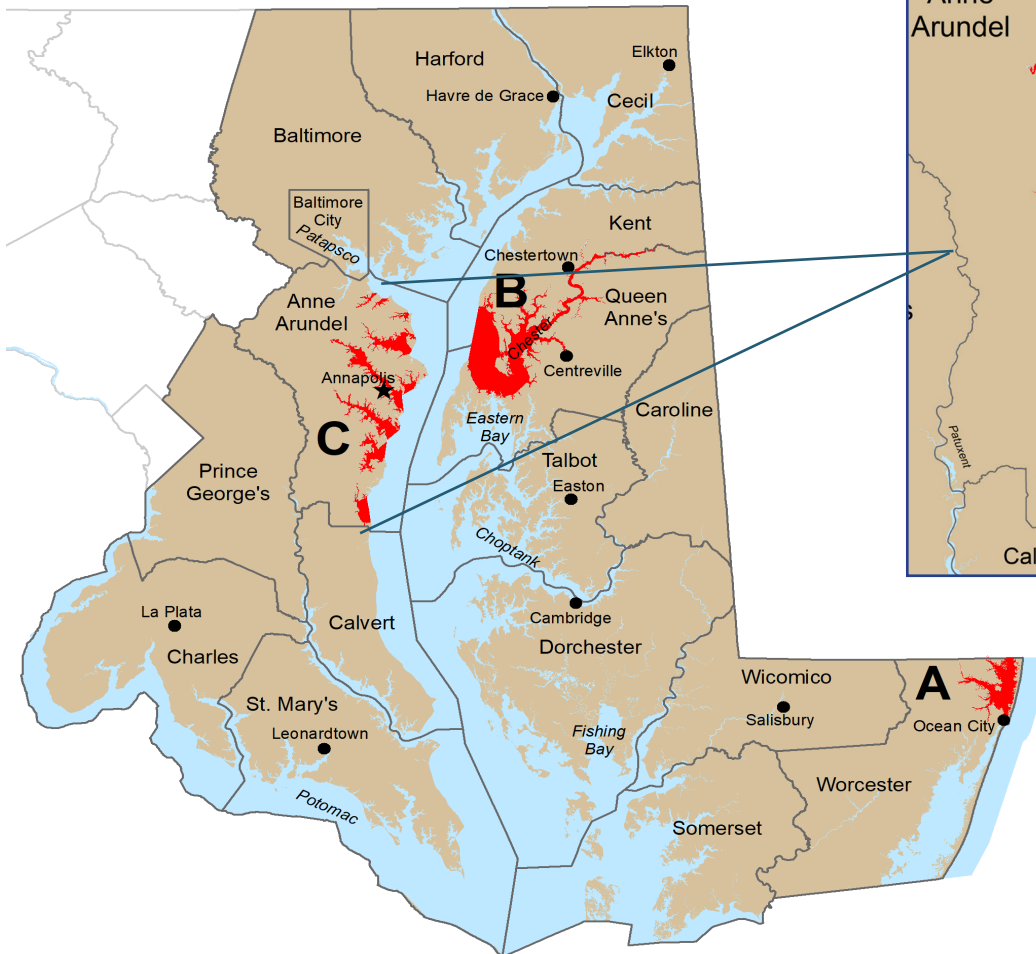
No Discharge Zones in Maryland

In cooperation with local partners, Maryland has taken an extra step towards protecting sensitive waterways by working with the U.S. Environmental Protection Agency and local partners to designate No Discharge Zones (NDZs) in the following areas. The EPA has determined that sufficient pumpout stations are available for boaters in these areas. A complete list of pumpouts is found at dnr.maryland.gov/boating

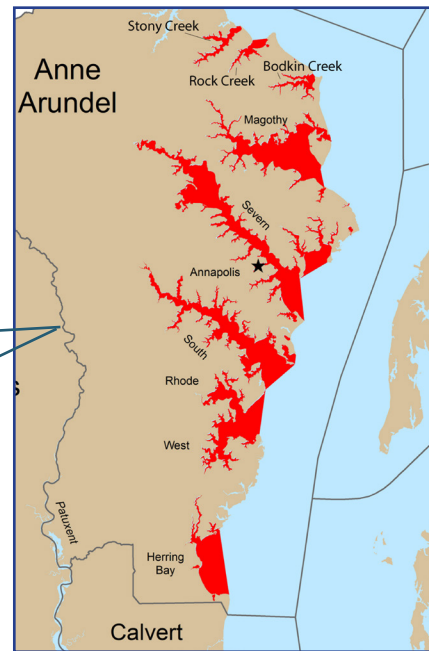
A: The Northern Coastal Bays: Sinepuxent, Isle of Wight and Assawoman Bays

B: Chester River and its tributaries

C: Central Western Shore—Anne Arundel County



C: Central Western Shore



Maps for illustrative purposes only. Not for navigation. Precise locations are found in the Maryland Code of Regulations 26.08.03.01.

No Discharge Zones (NDZs) are areas of water where the discharge of on-board sewage treatment systems is prohibited. The discharge of untreated (raw) sewage is already prohibited anywhere within three-miles of the U.S. coast. An NDZ does not restrict the discharge of gray water (from sinks and showers).

Maryland's NDZs were selected for several reasons:

- high concentration of boats
- resources sensitive to boat sewage
- water contact activities
- waters impaired by nutrients and sediment
- strong local support

Complying with NDZ

When navigating within an NDZ:

- Secure Type I and Type II MSDs (treat and release systems). Acceptable methods to secure these systems include locking the door to the head or disabling the seacock.
- Type I and II MSDs do not have to be removed. They can be used outside of the NDZs.
- Use pumpout facilities to empty Type III systems (holding tanks) and portable toilets.
- Find pumpout stations at dnr.maryland.gov/boating

To Report NDZ Violations

Maryland Department of the Environment
410-537-3000 (weekdays)
1-866-MDE-GOTO (evenings and weekends)

NDZ Enforcement

Cooperation by boaters is the key to successful implementation of NDZs. Please respect restrictions in these areas and encourage other boaters to do so. Violators will be subject to civil penalties up to \$10,000.

**Keep Our Waters Clean—
Use Pumpouts!**



Adequate facilities are required to help boaters act responsibly. The EPA has determined that sufficient pumpout stations are available for boaters in these areas. Maryland law requires marinas with 50+ slips or any new or expanding marina to have a pumpout station.

Maryland DNR administers grants to marinas to purchase and maintain pumpout facilities. More than 340 marinas across Maryland are equipped with one or more units designed to handle waste from holding tanks and portable toilets. There are also three pumpout boats operating in Annapolis, St. Michaels & Wye River, and the West & Rhode rivers during the boating season.

**Find pumpouts and much more at
dnr.maryland.gov/boating.**

Report Inoperable Pumpouts

Maryland Department of Natural Resources
410-260-8772 (weekdays)
pumpouts.dnr@maryland.gov



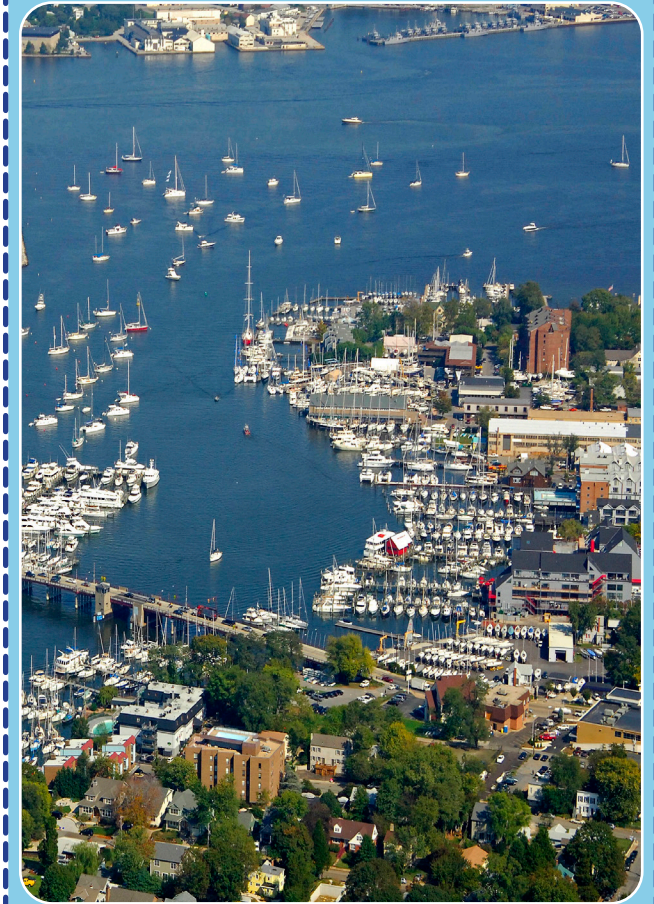
Maryland
Department of
the Environment

This document was produced by the
Maryland Department of Natural Resources
Chesapeake & Coastal Service
580 Taylor Avenue, E-2
Annapolis, MD 21401
410-260-8772
Toll free in Maryland: 877-620-8367
TTY Users call via the MD Relay
dnr.maryland.gov/boating

Printed May 2022 on recycled paper
Publication # DNR 14-050322-316

The facilities and services of the Maryland Department of Natural Resources are available to all without regard to race, color, religion, sex, sexual orientation, age, national origin, or physical or mental disability. This document is available in alternative format upon request.

NO DISCHARGE ZONES in Maryland



A Boater's Guide 2022